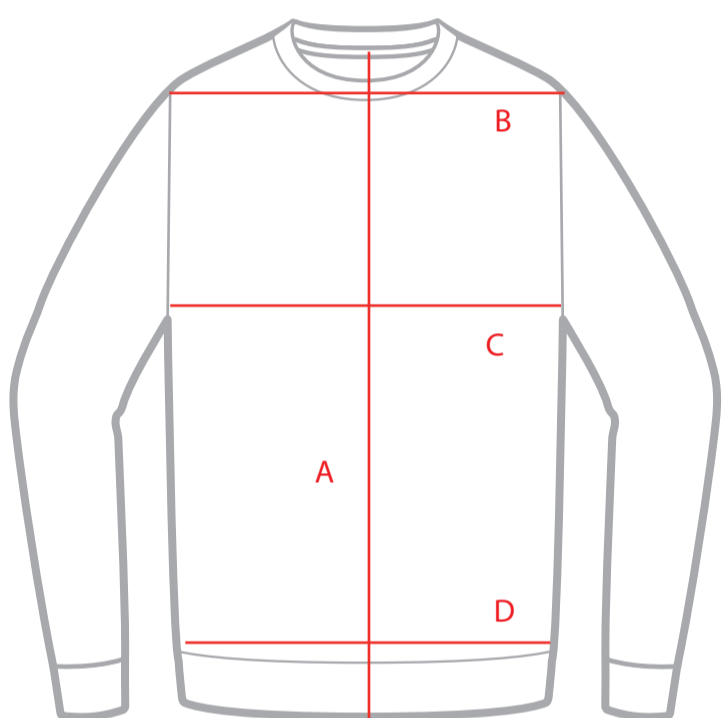


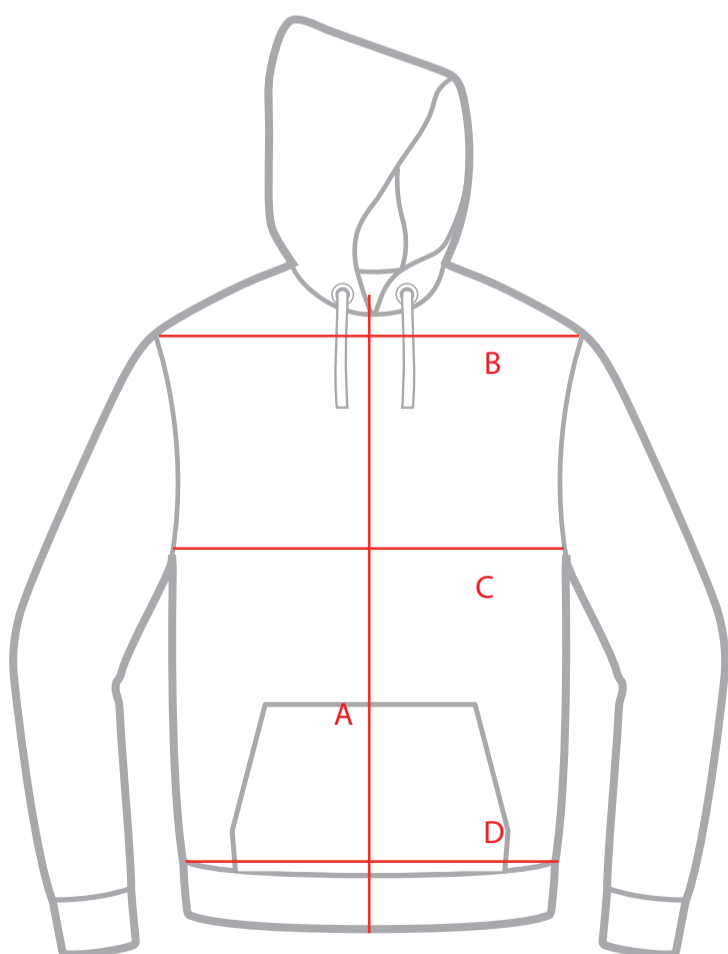
BASIC T-SHIRT

MEASUREMENT (CM)		S	M	L	XL	XXL
A	BODY LENGTH	68,5	70,5	72,5	74,5	76,5
B	SHOULDER WIDTH	43	45	47	49	51
C	CHEST	50	52	54	56	58
D	BOTTOM	50	52	54	56	58



BASIC CREWNECK

MEASUREMENT (CM)		S	M	L	XL	XXL
A	BODY LENGTH	66	69,8	75	78,7	80,7
B	SHOULDER WIDTH	45,75	48,25	50,75	53,25	55,75
C	CHEST	51	53,5	56	58,5	61
D	BOTTOM	45	47,5	50	52,5	55



BASIC HOODY

MEASUREMENT (CM)		S	M	L	XL	XXL
A	BODY LENGTH	66	69,8	75	78,7	80,7
B	SHOULDER WIDTH	45,75	48,25	50,75	53,25	55,75
C	CHEST	51	54	56,5	59	61,5
D	BOTTOM	41	43,5	46	48,5	51